



MULTI PURPOSE ENGINES

TDRF Diesel Series



Customer Benefits

- Unique, compact and rugged design for extreme conditions.
- Torque advantage in similar engine class.
- Application flexibility with customized power take-off arrangement.
- Cost effective thanks to low fuel and low oil consumption.
- Long engine life.
- Backed by professional after-sales support.
- Optional a complete range of accessories.



Quick Specifics

- 4-stroke, 1-cylinder, air-cooled diesel engine.
- Rope, recoil or electric starting.
- Die-cast aluminium crankcase with integral cast iron cylinder liner.
- Counter-clockwise rotation (View from PTO side).
- Standard conical PTO and different PTO options.

Applications



Agricultural Machinery Applications

walk-behind tractor, power tiller, agricultural mower, water-pump (irrigation)



Industrial Applications

fire-fighting pump, air compressor, vibrating plate, light construction, defence industry



Power Product Applications

generator set, power units, welder



Marine Applications

inboard engines for boats



DIESEL ENGINES

Model			TDRF80	TDRF80/S	TDRF90	TDRF90/S
Number of cylinders			1	1	1	1
Bore x Stroke	mm		80 x 75	80 x 75	90 x 75	90 x 75
Displacement	cm ³		377	377	477	477
Compression Ratio			19:1	19:1	18.5:1	18.5:1
Rating	N(DIN70020)	kw (HP)	6 (8.2)	6.5 (8.8)	7.4 (10)	8,1 (11)
	NB(DIN6270)	kw (HP)	5.6 (7.6)	6 (8.2)	6.8 (9.3)	7.5 (10.2)
	NA(DIN6270)	kw (HP)	5.2 (7)	5.6 (7.6)	6.3 (8.6)	7 (9.5)
Speed	rpm		3000	3600	3000	3600
Max. Torque	(NM@rpm)		21@2500	21@2500	25@2500	25@2500
Fuel Tank Capacity	liter		5.5	5.5	5.5	5.5
Oil Sump Capacity	liter		2	2	2	2
Rotation (view from PTO side)			Counter-clockwise	Counter-clockwise	Counter-clockwise	Counter-clockwise
Dry Weight	kg		48	48	48	48

Model			TDRF120	TDRF120/S	TDRF140
Number of cylinders			1	1	1
Bore x Stroke	mm		90 x 85	90 x 85	95 x 85
Displacement	cm ³		541	541	602
Compression Ratio			18:1	18:1	18:1
Rating	N(DIN70020)	kw (HP)	9 (12.2)	9.5 (13)	10.1 (13.6)
	NB(DIN6270)	kw (HP)	8.2 (11.2)	8.8 (12)	9.2 (12.5)
	NA(DIN6270)	kw (HP)	7.6 (10.3)	8.2 (11.2)	8.4 (11.5)
Speed	rpm		3000	3600	3000
Max. Torque	(NM@rpm)		32.6@2400	32.6@2400	38.2@1800
Fuel Tank Capacity	liter		5.5	5.5	5.5
Oil Sump Capacity	liter		2	2	2
Rotation (view from PTO side)			Counter-clockwise	Counter-clockwise	Counter-clockwise
Dry Weight	kg		56	56	57

Note: All data (technical information, product images etc.) are subject to alteration by YAĞMUR MOTOR A.Ş. without notice.

MULTI PURPOSE ENGINES

TDF 292 Diesel Engine



Customer Benefits

- Unique, compact and rugged design for extreme conditions.
- Torque advantage in similar engine class.
- Application flexibility with customized power take-off arrangement.
- Cost effective thanks to low fuel and low oil consumption.
- Long engine life.
- Backed by professional after-sales support.
- Optional a complete range of accessories.



Quick Specifics

- 4-stroke, 2-cylinder, air-cooled diesel engine.
- Die-cast aluminium crankcase
- Counter-clockwise rotation (View from PTO side).
- Standard conical PTO and different PTO options.

Applications



Agricultural Machinery Applications

walk-behind tractor, power tiller, agricultural mower, water-pump (irrigation)



Industrial Applications

fire-fighting pump, air compressor, vibrating plate, light construction, defence industry



Power Product Applications

generator set, power units, welder



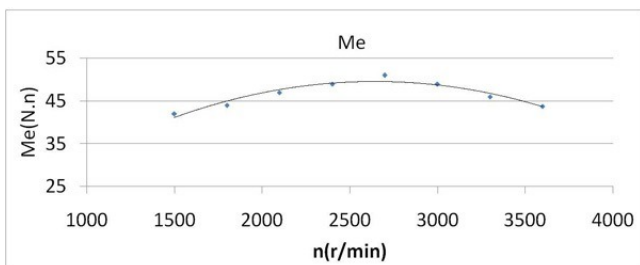
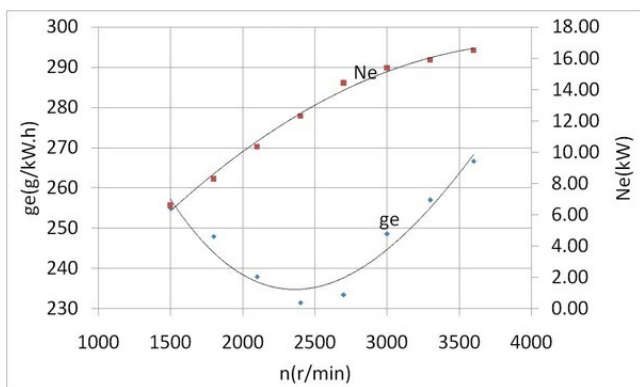
Marine Applications

inboard engines for boats

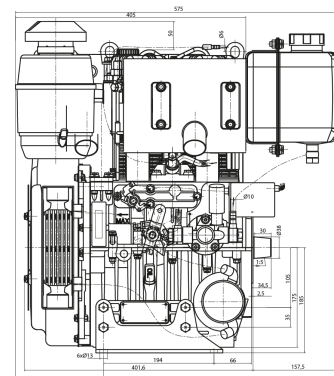
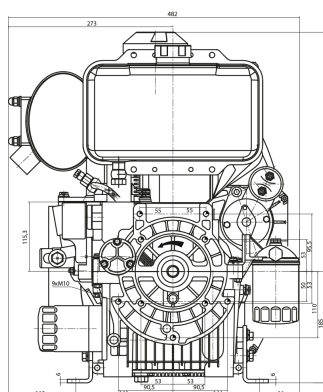
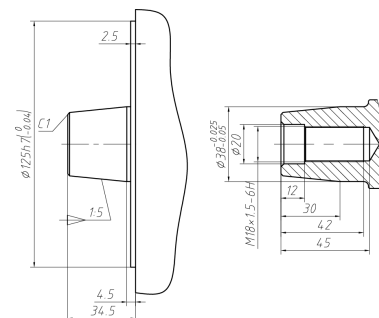
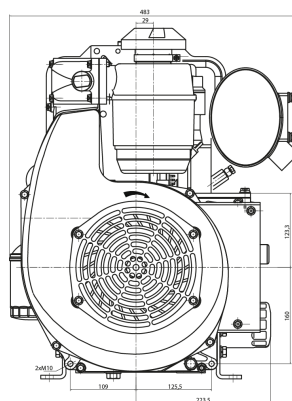
DIESEL ENGINE

Model		TDF 292
Number of cylinders		2
Bore x Stroke	mm	92 x 75
Displacement	cm ³	997
Compression Ratio		19:1
Rated Power	kw (HP)	16,4 (22)
Speed	rpm	3000
Max. Torque	(NM@rpm)	48 @ 2500
Fuel Tank Capacity	liter	5.5
Oil Sump Capacity	liter	2,75
Rotation (view from PTO side)		Counter-clockwise
Dry Weight	kg	78

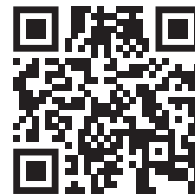
Performance Curves



Dimensions and PTO sizes

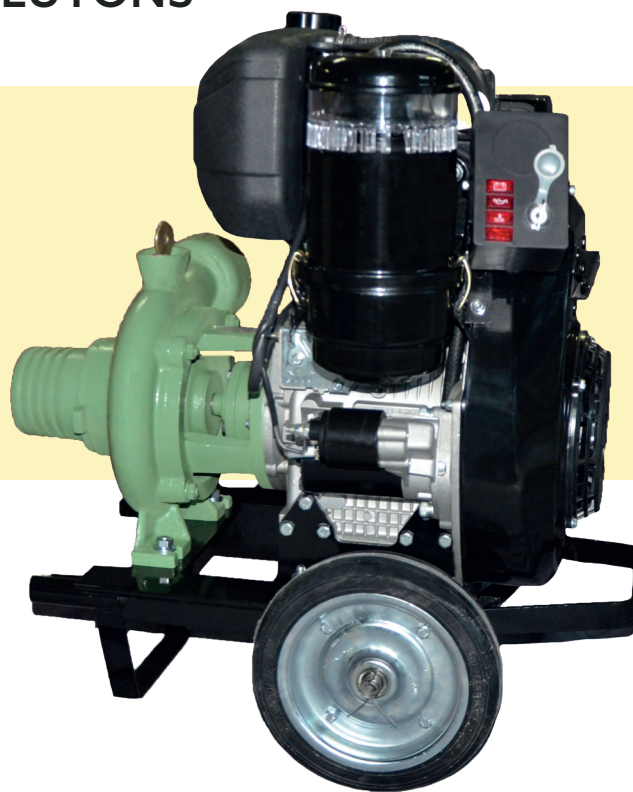


Note: All data (technical information, product images etc.) are subject to alteration by YAĞMUR MOTOR A.Ş. without notice.



WATER PUMPS & IRRIGATION SOLUTIONS

YKF - SKF Diesel Series



Customer Benefits

- Unique, compact and rugged design for extreme conditions.
- Torque advantage in similar engine class.
- Easy starting with electric starting option.
- Cost effective thanks to low fuel and low oil consumption.
- Long engine life.
- Backed by professional after-sales support.
- Optional a complete range of accessories.



Quick Specifics

- 4-stroke, 1-cylinder, air-cooled diesel engine.
- Rope, recoil or electric starting.
- Sprinkler irrigation or flood irrigation options.
- Scroll case and centrifuge pump.
- Monoblock accouplement type.

Applications



Agricultural Machinery Applications
water-pump (irrigation)



Industrial Applications
fire-fighting pump

Please contact us for alternative solutions. Professional engineering team of YAGMUR MOTOR A.S. provides services for various agricultural irrigation and industrial pump solutions.



DIESEL WATERPUMPS

Model			TDRF90 YKF100-3	TDRF120 YKF100-3	G 1510 YKF100-3	TDRF140 YKF100-4
Engine			TDRF90 10 HP (7,5kW) Diesel	TDRF120 12,2 HP (9kW) Diesel	G 1510 12,2 HP (9kW) Diesel	TDRF140 13,6 HP (10kW) Diesel
Pump Types			Scroll Case, Centrifuge, Sprinkler Irrigation	Scroll Case, Centrifuge, Sprinkler Irrigation	Scroll Case, Centrifuge, Sprinkler Irrigation	Scroll Case, Centrifuge, Sprinkler Irrigation
Engine Speed	rpm		3000	3000	3000	3000
Pump Inlet Diameter	inch		4"	4"	4"	4"
Pump Outlet Diameter	inch		3"	3"	3"	4"
Effective Working Range	Capacity	ton/hour	30	40	40	55-75
	Head	meter	45	50	50	40-20
Fuel Tank Capacity	liter		5.5	5.5	5.5	5.5
Accouplement Type			Monoblock	Monoblock	Monoblock	Monoblock
Packing Gland Type			Mechanic	Mechanic	Mechanic	Mechanic
Weight	kg		105	106	106	107
Dimensions	cm		80x63x80	80x63x80	80x63x80	80x63x80

Model			TDRF90 SKF80 - 2,5	TDRF120 SKF100-3	G 1510 SKF100-3	TDRF140 SKF100-4
Engine			TDRF90 10 HP (7,5kW) Diesel	TDRF120 12,2 HP (9kW) Diesel	G 1510 12,2 HP (9kW) Diesel	TDRF140 13,6 HP (10kW) Diesel
Pump Types			Scroll Case, Centrifuge, Flood Irrigation	Scroll Case, Centrifuge, Flood Irrigation	Scroll Case, Centrifuge, Flood Irrigation	Scroll Case, Centrifuge, Flood Irrigation
Engine Speed	rpm		3000	3000	3000	3000
Pump Inlet Diameter	inch		3"	4"	4"	4"
Pump Outlet Diameter	inch		2,5"	3"	3"	4"
Effective Working Range	Capacity	ton/hour	40-60	60-98	60-98	70-100
	Head	meter	38-20	35-20	35-20	30-10
Fuel Tank Capacity	liter		5.5	5.5	5.5	5.5
Accouplement Type			Monoblock	Monoblock	Monoblock	Monoblock
Packing Gland Type			Mechanic	Mechanic	Mechanic	Mechanic
Weight	kg		105	106	106	107
Dimensions	cm		80x63x80	80x63x80	80x63x80	80x63x80

Note: All data (technical information, product images etc.) are subject to alteration by YAĞMUR MOTOR A.Ş. without notice.